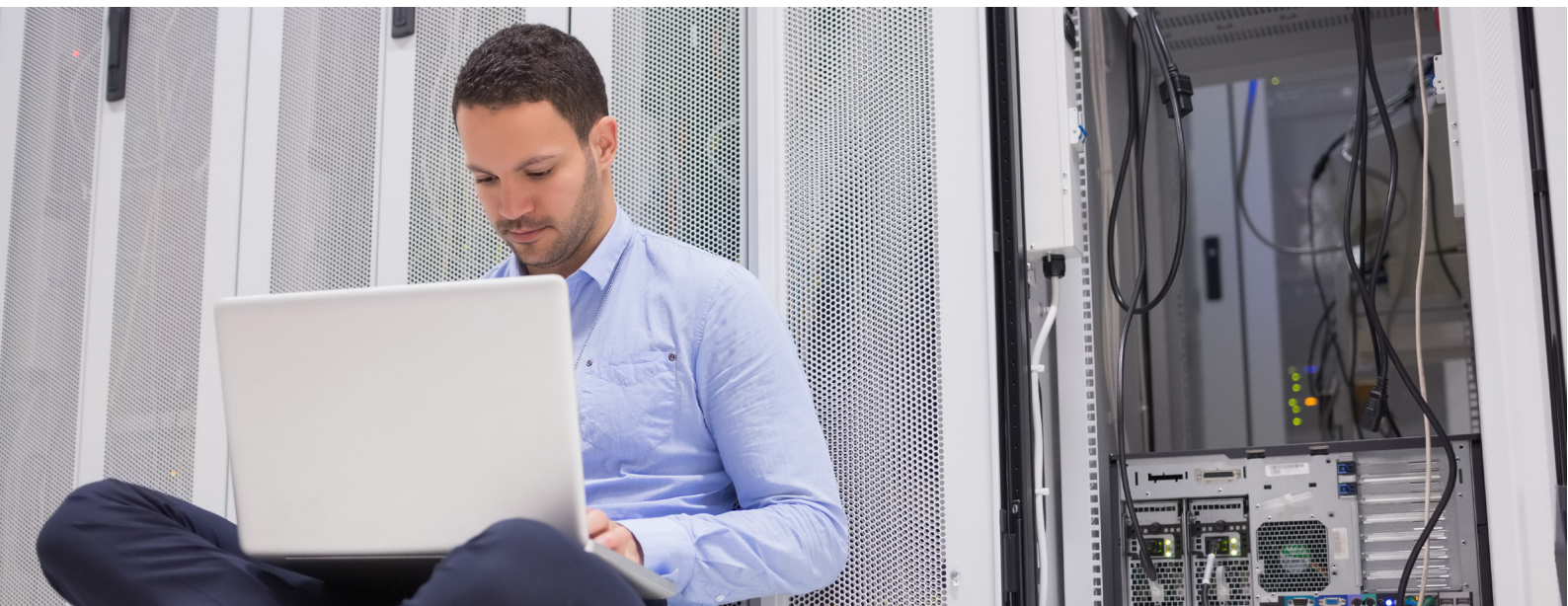


SERVICE OVERVIEW

OpenText Magellan-powered, AI-Augmented Capture FasTrak service

Eliminate time-consuming, error-prone manual effort by using machines to understand content and automate classification, entity extraction and routing at scale



Benefit from access to a specialized team



Improve time to market



Experience 75 percent fewer support issues



Employ best practices

Capturing and classifying information is a burdensome and costly manual effort but implementing new solutions can be challenging, complex and time-consuming for the IT team. Using AI-augmented capture eliminates time-consuming, error-prone manual effort by using machines to understand content, add context and to automate classification, entity extraction and routing at scale. The OpenText Magellan-powered AI-Augmented Capture FasTrak Service helps to ensure a smooth implementation.

OpenText Professional Services experts will implement the AI-augmented solution using best practices to get organizations up and running faster with fewer issues. They will implement and integrate OpenText™ Magellan™ with the existing capture solution, configuring it for AI-augmentation. OpenText will deliver a briefing to the technical and business team describing the implementation and use of the solution.

With the AI-Augmented Capture FasTrak service, organizations:

- **Benefit from access to a specialized team:** A dedicated and specialized team comprised of a data scientist, computational linguist and OpenText consultants.
- **Improve time to market:** The Professional Services team implements the solution in a way that best minimizes system interruption.

- **Experience 75 percent fewer support issues:** Professional Services deliveries lead to 75 percent fewer support issues as OpenText experts help reduce deployment time, deliver a more robust solution and help increase user productivity.
- **Employ best practices:** OpenText experts deploy best practices and provide guidance and assistance to offer the best implementation, which can scale for future growth.

Available training and workshops:

[2-2910 OpenText Semantic Strategy Workshop](#)

[2-2933 Understanding and Building Taxonomies – NEW](#)

[1-2921 Understanding and Using OTCA Manager](#)

The FasTrak approach

The Professional Services FasTrak uses a two-phase approach to implement AI-Augmented Capture. These phases are implemented in two separate Enabler projects, allowing customers to start quickly with Enabler 1 and progress to the Enabler 2 project when ready.

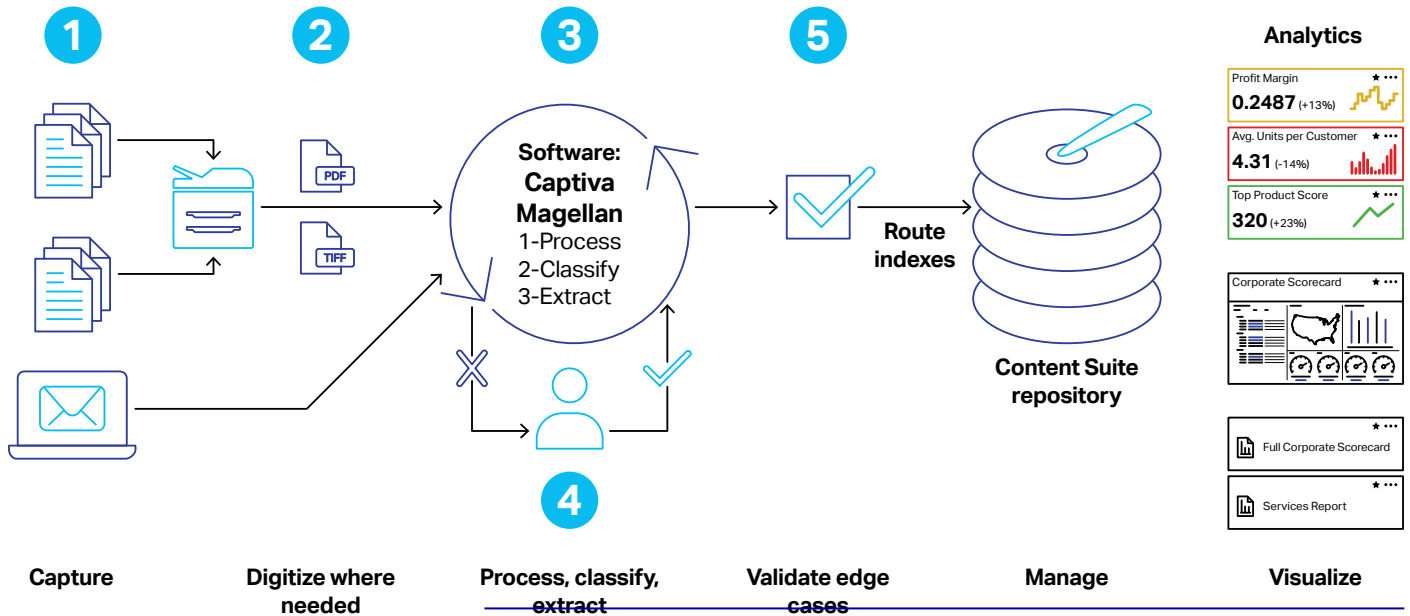
The Enabler 1 project deploys OpenText™ Magellan™ Text Mining and OpenText™ Magellan™ BI & Reporting components into a single environment, integrating both with the capture solution. Phase 1 includes a Semantic Strategy Workshop, providing a documented, high-level approach to extracting semantic metadata from captured customer documents. On completion of Phase 1, a working capture workflow is available extracting semantic metadata to use as a template for customer use cases. Three reports and two dashboards are provided for monitoring and optimizing capture processing.

The Enabler 2 project adds and integrates OpenText™ Magellan™ Data Discovery into the base AI-Augmented Capture solution. This phase begins with a Business and AI Analytics Workshop to identify a customer use case that will be the basis of work. The Magellan Data Discovery component is configured and trained using one structured external data source and two reports, typically chosen to support the customer use case. The capture process flows can now call both Magellan Text Mining and Magellan Data Discovery to first extract and then analyze semantic metadata to determine what should be the next action for a document.

OpenText Magellan-powered, AI-Augmented Capture FasTrak Service includes

Captiva	Transforms electronic and paper documents into application-ready information to support modern workflows. This FasTrak service assumes that OpenText® Captiva® has been deployed or will be deployed as a preliminary step.
Magellan	Is a flexible artificial intelligence (AI) and analytics platform that combines machine learning, advanced analytics and enterprise-grade business intelligence (BI) with the ability to acquire, merge, manage and analyze structured and unstructured big data.
Professional Services Smart Capture for Captiva	Table Body. Manage and archive corporate content in a consistent and compliant manner with fully integrated records, metadata, archiving, and storage management services.
Professional Services Captiva Dashboard Package	Includes pre-built reports and dashboards to provide insight on the health of a Captiva environment and monitoring of Captiva processes, including AI-augmented ones.

AI-Augmented Capture process with Captiva



Capture

Digitize where needed

Process, classify, extract

Validate edge cases

Manage

Visualize

Learn more

- AI & Analytics Consulting Services »
- OpenText Magellan »
- Idea to Insight »
- OpenText Intelligent Capture »
- AI-Augmented Capture Solution Overview »

OpenText Learning Services offerings are available to further onboard the customer. OpenText Consulting Services can be engaged to support a variety of additional requirements beyond the scope of this FasTrak, including the implementation of OpenText Captiva Capture if not already implemented. Further AI consultancy to support other customer use cases is also available.

About OpenText

OpenText, The Information Company, enables organizations to gain insight through market leading information management solutions, on-premises or in the cloud. For more information about OpenText (NASDAQ: OTEX, TSX: OTEX) visit: [opentext.com](https://www.opentext.com).

Connect with us:

- OpenText CEO Mark Barrenechea's blog
- Twitter | LinkedIn