

PRODUCT OVERVIEW

OpenText™ Axcelerate™

End-to-end e-discovery and investigations platform



Simplify e-discovery

with end-to-end functionality in a single platform



Increase efficiency and cost savings with built-in generative AI, analytics, and technology-assisted review



Proactively manage and mitigate risk



Improve data-driven decision making

Exploding data volumes and sources, heightened regulatory requirements, and increased data privacy and cybersecurity risks are driving up the costs and risks of e-discovery, investigations, and regulatory compliance mandates. While litigation budgets are under scrutiny, legal teams are still expected to deliver superior results on time.

To achieve efficiency and cost savings, legal teams are looking to end-to-end solutions with integrated AI, analytics, machine learning, rich visualizations, and automation.

OpenText™ Axcelerate™ is a flexible, powerful, end-to-end e-discovery and investigations platform incorporating proprietary AI, advanced analytics, machine learning, and automation. Revolutionize discovery with Legal Tech Aviator, the central AI nervous system of the OpenText smart legal platform,

Axcelerate delivers best-in-class investigative capabilities in a fully integrated, intuitive review interface to help legal teams get to facts that matter sooner and inform case strategy.

OpenText Professional Services

- e-discovery Advisory Services
- Managed Document Review
- Recon Investigations Service
- Breach Response Analysis and Reporting
- Digital Forensics and Collections
- Software Consulting and Implementation



opentext™ | Aviator

Simplify e-discovery with end-to-end functionality in a single platform

Axcelerate empowers users to take greater control over ingesting, collecting, and culling data intelligently. By automating as many manual tasks as possible, legal teams can review only what is necessary, reducing costs and risks.

Axcelerate streamlines and simplifies e-discovery and investigations. It integrates data exploration and identification, collection, processing, analysis, review, and production in a single platform delivered by a single vendor. Axcelerate offers front-end analytics for true early case assessment and data investigation, driving rapid data insight and faster case strategy and decisions. Integrated AI, analytics, and review capabilities allow a streamlined process that quickly surfaces relevant content.

Increase efficiency and cost savings with built-in AI, analytics, and technology-assisted review

Built-in AI, data analytics, and technology-assisted review (TAR) capabilities provide legal teams with early and important insights to quickly understand and intelligently organize data. Improve review efficiency and cost savings by minimizing the volume of documents warranting legal review.

Features include AI-generated key document and concept label summaries for improved case and review strategy and prioritization, as well as enhanced TAR workflows for every scenario. Choose from Axcelerate's original continuous-machine learning workflow or the new continuous-active learning workflow and integrated contextual diversity algorithm. This new option learns what is important to a matter in real time while also surfacing documents from contextually diverse pockets of data to ensure that nothing is overlooked.

Other features include:

- Predictive filters and predictive searching surface conceptually similar documents on the fly without requiring a full TAR workflow.
- Automated phrase and concept analysis intelligently organize documents to further speed review.
- Stackable Smart Filters leverage a wide range of metadata to efficiently narrow in on relevant content.
- Extensive reporting throughout the platform to keep projects on time and within budget.
- Overturn reporting to help standardize coding decisions and avoid rework late in projects.

Proactively manage and mitigate risk

Integrated capabilities and standardized processes minimize the risk of missing critical information or inadvertently disclosing privileged, sensitive, or private information. Features include:

- Automated sensitive data detection finds common or custom patterns. Pre-configured patterns are embedded in search filters for easy access and effective use.
- Automated entity extraction locates people's names unrelated to a data privacy rights request.

"The OpenText Axcelerate platform has been elegant from the beginning. It was a smooth transition. We were able to reduce costs materially, almost immediately. I wish we had done it sooner."

Sam Castor, EVP, Switch

[Read the Success story](#)

"OpenText Axcelerate changes the way that we investigate. It has become a much more intuitive and iterative process. We're embedding that in the culture of our investigations now."

Richard Day
Serious Fraud Office

[Read the Success story](#)

- Bulk redaction capabilities streamline the process and ensure that redactions are applied consistently across the data set.
- Inverse redactions efficiently redact all data within a document except for what is selected, streamlining effort when the majority of content needs to be redacted.
- Self-triggered quality assurance checks help assure risk-free production.

Leverage AI to improve data-driven decision making

With embedded Aviator generative AI capabilities and advanced analytics, legal teams can conduct effective investigations and early case assessment (ECA) for enhanced data-driven strategy. Features include:

- Automatic identification and AI-generated summarization of key documents for rapid and defensible ECA and review strategy.¹
- AI-generated natural language summaries of concept labels for intuitive contextual insight.¹
- Advanced text analytics surface sentiment within documents, distinguish fact from opinion, and identify the people, places, and organizations.

Flexible deployment models

Axcelerate provides enterprises with the flexibility necessary for managing and securing sensitive data via various deployment options:

- **Cloud-based, on-demand model for single matters or as a subscription**
Axcelerate provides enterprises with fully inclusive access to powerful analytics, machine learning, and review capabilities via ultra-secure cloud infrastructure with flexible service options.
- **On-premises server-based solution**
Data ingestion, processing, ECA, review, and production capabilities are all behind the corporate firewall. Highly scalable for data volumes, active matters, and number of users.
- **Hybrid approach**
Deploy OpenText™ Axcelerate™ ECA on premises with analytics and review capabilities running in the cloud. With one click, data can be transferred from the on-premises environment to the cloud for review.
- **Air-gapped temporary portable solution**
Axcelerate Portable Solution is an appliance-based full instance of Axcelerate for temporary, on-site projects. This simplifies protecting against cyber threats and compliance with country- or location-specific data privacy requirements.

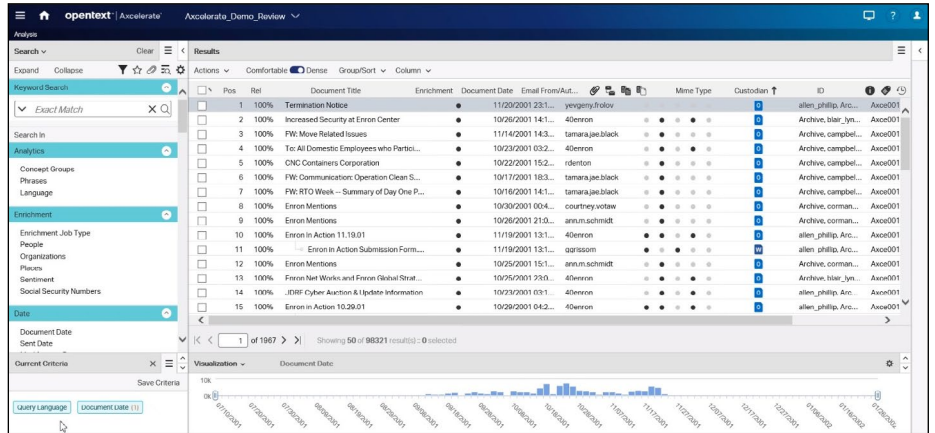
¹ Cloud deployments only

OpenText Axcelerate features

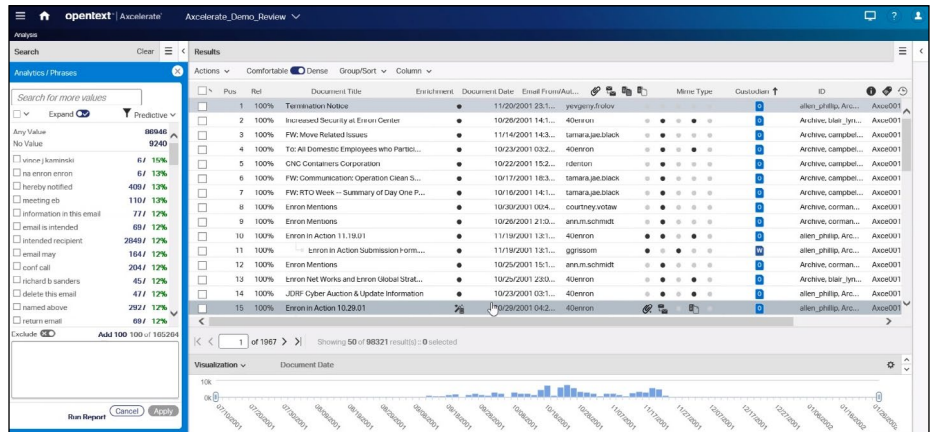
Legal Tech Aviator (Cloud)	<p>This central AI nervous system offers:</p> <ul style="list-style-type: none"> • AI-generated summaries of key documents to help teams rapidly identify, understand, and validate key evidence and fact patterns. • AI-generated natural language summaries of concept labels for intuitive contextual insight.
Connectors	Leverage extensive turn-key connectors to general databases, directories, file systems and content management platforms (available for Axcelerate on-premises and Axcelerate Private Cloud installations).
Smartphone data processing	Process a broad set of data from smartphones, including SMS, MMS, loose files, chat, geolocation data, browsing data including history and searches, calendar entries and notes, via parser support for Cellebrite™, XRY™, and Oxygen™.
Multi-faceted concurrent search	Run multiple, concurrent queries powered by OpenText MindServer AI-enhanced search—faster and more accurate than running sequential individual searches.
Early case assessment	Create highly targeted data sets to speed time to review, with processing, OCR, deduplication and deNISTing. Organize documents into families by content similarity.
Machine translation	Use seamless Amazon Translate integration or Vertione aiWARE to translate documents in bulk or individually from virtually any language into any other language. Conduct review in multiple languages or standardize review in any preferred language.
Smart Filters	Rapidly isolate key data with dozens of stackable filters based on metadata, content and customizable work-product.
Predictive filters	Find relevant data faster with predictive filters that learn from human review decisions to use the search terms and parameters most likely to uncover valuable insights. These can include which content stores are probable sources of relevant content, what content is most likely to be privileged, and which custodians are most likely to have relevant documents.
Predictive search	“Find more like me” with TAR functionality on the fly, without any workflow or sampling requirements. Compare documents known to be relevant against the entire corpus or execute search queries and use selected results to find other documents with similar content.
End-of-branch email analysis	Limit review to the most inclusive emails at the end of each branch and spot any missing or unique messages for dramatic time savings.
Browser-agnostic viewer	View documents in any browser with high-fidelity rendering, efficient pre-caching and smart tagging controls.
End to end Audio/Video support (Cloud)	Access the contents of audio and video (AV) files in both native and transcribed textual format, making it possible to search, analyze, redact and produce AV files quickly and easily.
Microsoft® Excel® support (Cloud)	View, search and redact Excel files with ease.
Chat data support	Expedite review and analysis of chat data in an intuitive interface.

OpenText Axcelerate features

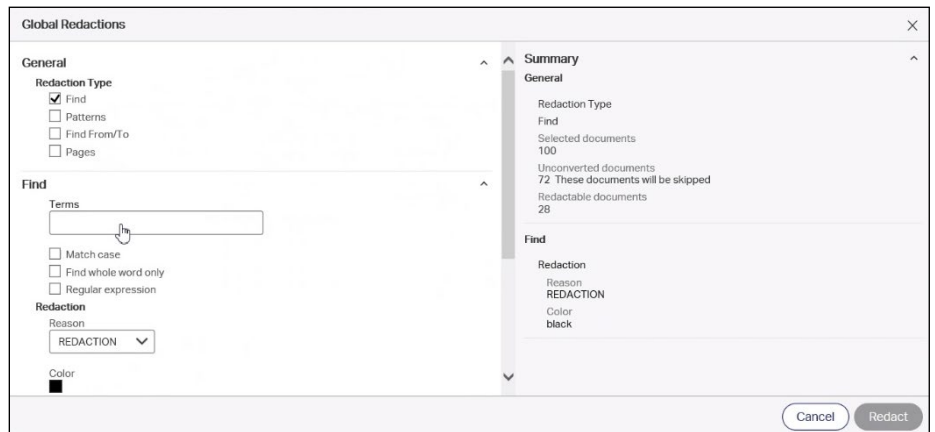
Negative proximity operator	Reduce false hits by ignoring keyword matches when the second term is used extraneously (e.g., in email signature lines). Only returns term1 keywords if they are a specified number of words away from term2 keywords.
Concept analysis	Group documents based on the contextual meaning of associated common phrases, allowing reviewers to gain context beyond keywords and code names.
Sentiment analysis	Gain a faster and deeper understanding of data by categorizing documents by whether they contain positive, negative or neutral sentiments.
Entity identification	Achieve additional layers of insight for communications analysis and investigations. Axcelerate Smart Filters include integrated detection tools that automatically surface the names of people, places and organizations.
Multilingual analytics	Enrich unstructured data with powerful analytics on a language-agnostic basic, including pictorial languages like Chinese, Japanese and Korean.
Production wizard	Select from pre-configured options for how the discovery set is presented.
Case management	Seamlessly send data to Opus 2 Case Management, a leading case management solution, to ensure that relevant information uncovered during review is reliably included in case management processes to optimize case strategy, depositions, negotiations, motions and the conduct of trials.
Hypergraph communications map	Analyze parties, domains, activity levels and timeframes around all communications of interest while visualizing email and chat connections.
Technology-assisted review	Choose from Axcelerate's original continuous machine learning algorithm or the new continuous active learning protocol and companion contextual diversity algorithm (cloud only) to get to relevant facts faster and overcome reviewer bias that may miss important information.
Automated document compare	Quickly identify subtle differences—modifications, additions, or deletions—between any two documents.
Self-service drag and drop processing (Cloud)	Gain greater control and flexibility when time and budget call for rapid data ingestion, processing and upload.
Password bank	Speed processing time and minimize errors by adding a list of known passwords for use during processing to attempt decryption of password-protected Microsoft Office and Adobe PDF documents.
Automated data detection and redaction	Auto-identify sensitive content in any identifiable pattern, such as PII, PCI, PHI, and NPI, and automatically redact it in bulk before review or production. Redaction reasons can be reviewed and edited by individual document or groups of documents.
Visualization	Axcelerate Visualizer provides highly accessible visualized display of potentially relevant content, with key indicators and criteria clearly presented, to facilitate fast and accurate review. Axcelerate Visualizer Heat Maps enable multi-factor visual analytics to expose associations within data for deeper insights.



Rapidly isolate key data with Smart Filters



Search with precision and breadth to narrow results and discover previously uncovered themes with Phrase Analysis



Automatically redact sensitive data in bulk before review or production

OpenText
Discovery solutions

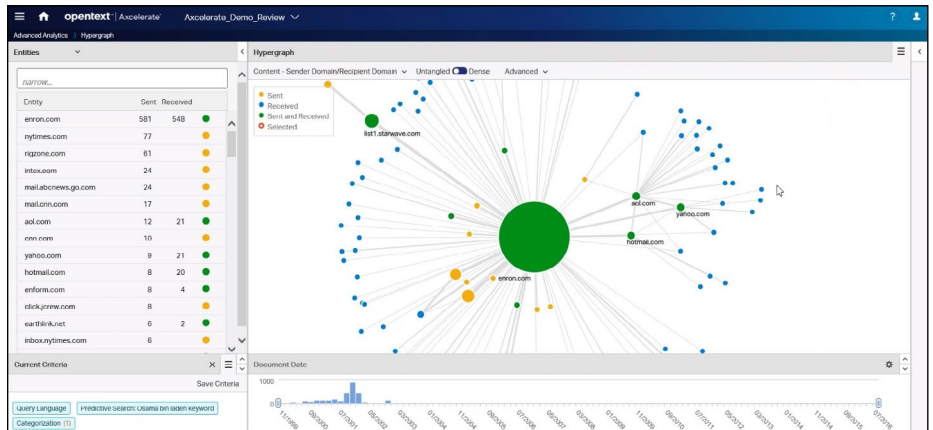
Optimizing subject
rights requests with
OpenText Axcelerate

OpenText Axcelerate
Portable Solution

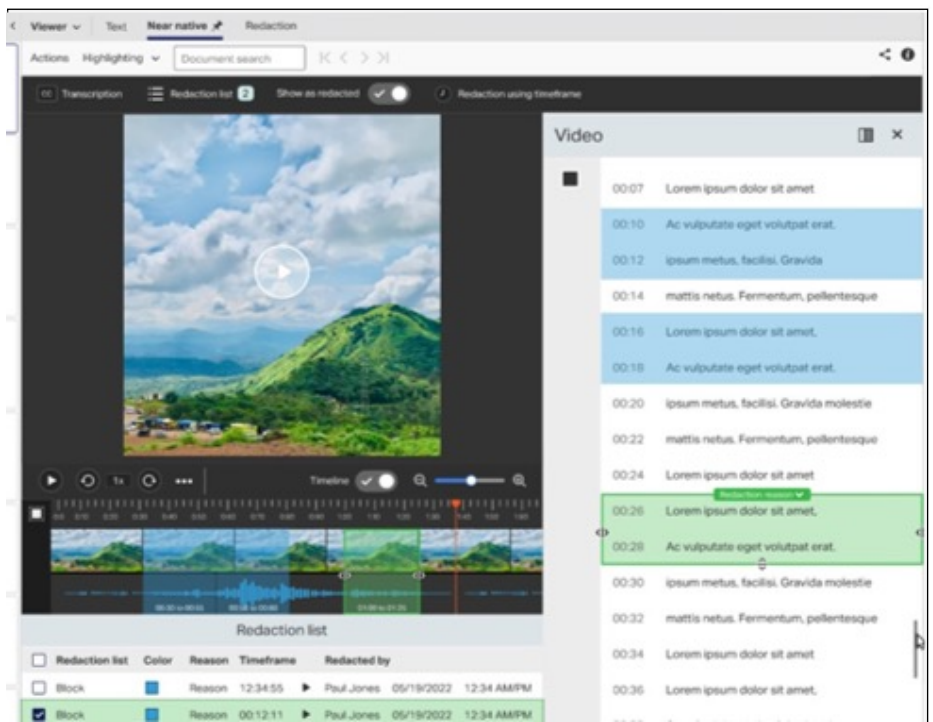
OpenText Managed
Document Review

**OpenText™ Axcelerate™
connectors:**

- Extensive support to common data sources, such as Microsoft®, Google™ and EnCase™ L01 and EX01 formats, including file shares, email and ECM systems and cloud repositories, among others. Available for on-premises and Axcelerate Private Cloud deployments.
- OpenText Axcelerate chat support:
 - Generic and dedicated parsers to support chat data from virtually any source. Dedicated connectors for Microsoft Teams® and Slack™.
- OpenText Axcelerate smartphone data processing:
 - Process a wide variety of smartphone data through support for Cellebrite™, XRY™ and Oxygen™.



Analyze parties, domains, activity levels, and timeframes for all communications of interest with hypergraph communications mapping



Access the contents of AV files in both native and transcribed textual format. Search, analyze, redact, and produce AV files quickly and easily.

About OpenText

OpenText, The Information Company, enables organizations to gain insight through market leading information management solutions, on premises or in the cloud. For more information about OpenText (NASDAQ: OTEX, TSX: OTEX) visit: opentext.com.

Connect with us:

- [OpenText CEO Mark Barrenechea's blog](#)
- [X \(formerly Twitter\)](#) | [LinkedIn](#)